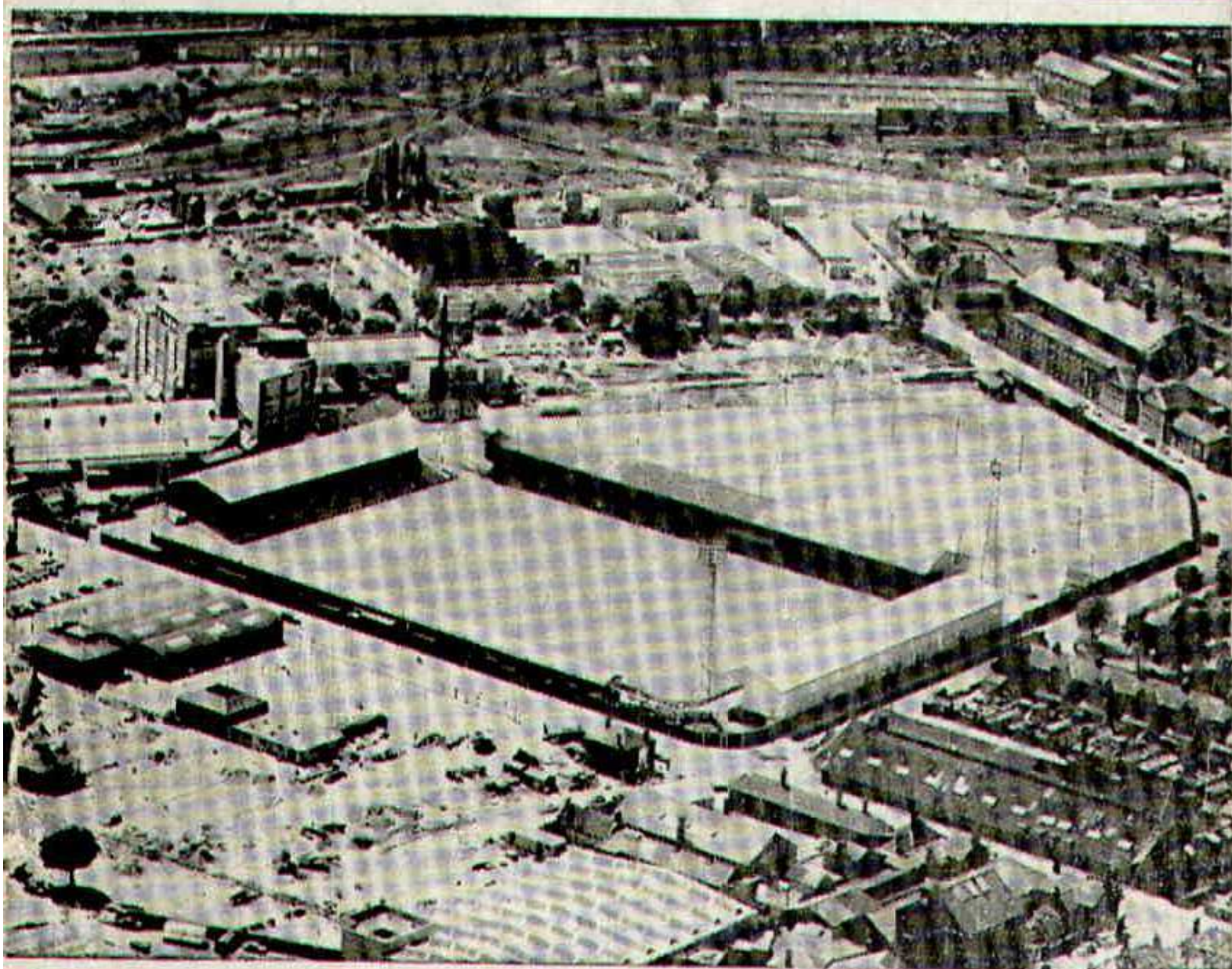


IPSWICH TOWN FOOTBALL CLUB

LEAGUE CHAMPIONS 1961-62



OFFICIAL PROGRAMME 6d.

AFTER the MATCH . . .

Insist on

**TOLLY
COBBOLD
ALES**

Your local

Beers are Best!

IPSWICH TOWN FOOTBALL CLUB COMPANY, LTD.

President: LADY BLANCHE COBBOLD

Vice President: CYRIL CATCHPOLE

Directors:

JOHN C. COBBOLD (*Chairman*)

KENNETH H. BRIGHTWELL

ALASTAIR P. COBBOLD

PATRICK COBBOLD

WILLIAM KERR

CECIL J. ROBINSON

J. MURRAY SANGSTER

NATHAN SHAW

HAROLD R. SMITH

MAJOR ALFRED D. R. TERRY

Manager: W. MCGARRY

Secretary: W. A. GRAY.

Telephone: 51306

TO-DAY'S GAME

No. 17.

Saturday, 13th March, 1965

IPSWICH TOWN

v.

SWINDON TOWN

LEAGUE DIVISION II.

Kick-Off 3 p.m.

FORTHCOMING ATTRACTIONS AT PORTMAN ROAD

Sat., Mar. 20 MANSFIELD TOWN (Combination) 3 p.m.

Tues., Mar. 23 BEDFORD TOWN (Mercia League) 7.30 p.m.

Sat., Mar. 27 MANCHESTER CITY (League) 3 p.m.

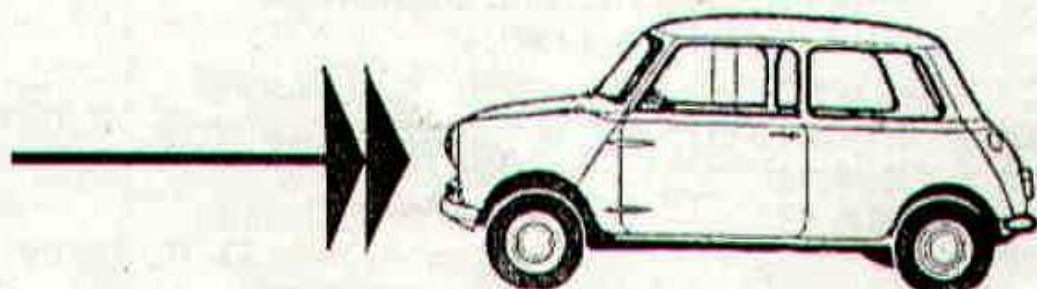
Mon., Mar. 29 PETERBOROUGH UNITED (Combination)
7.30 p.m.

Sat., Apr. 3 COLCHESTER UNITED (Combination) 3 p.m.

Sat., Apr. 10 LEYTON ORIENT (League) 3 p.m.

Tues., Apr. 13 CAMBRIDGE UNITED (Mercia League)
7.30 p.m.

HOME AND AWAY ..



-IT'S A MINI

The manoeuvrability and park-easy characteristics of the Austin Mini make it the ideal car to satisfy the many demands of the home. On the other hand, when going away, this car fits the bill for big car comfort and fast inter-city coverage. It's economical too. A demonstration run will convince you that the Austin Mini can solve your home and away motoring problems.

SERVICE & REPAIRS

It's good to know that Botwoods can give you specialised servicing, plus the most expert repairs possible. There are no better reasons than this for going to Botwoods. Prove it for yourself.



Botwoods

AUSTIN DISTRIBUTORS

Major's Corner, Ipswich. Telephone: 52271

IPSWICH TOWN CLUB NOTES

OUR climb up the Second Division table has continued in the past fortnight with victories over Swansea Town and Bury. Before today's match we were in seventh position with all fears of relegation safely behind us. Indeed there is a wonderful chance that we might even end the season in the talent money zone. The match against Swansea saw us win by three clear goals, Gerry Baker, Frank Brogan and Joe Broadfoot being the marksmen.

We met Bury at Gigg Lane on the Friday night of last week and came away with both points, thanks to a well-taken goal by Frank Treacy whose speed on the frozen surface left the defence flat-footed. This was largely a defensive battle and provided us with our second "double" of the season, the other being at Middlesbrough's expense. Maybe the most notable feature of the Bury trip was that the team travelled by air and returned home the same night. Bill McGarry was delighted and it is hoped that air travel will be used for many Northern fixtures in future.

There is no lack of incident here at Portman Road nowadays and it is time to say "goodbye" to two of the club's best known and most popular players. Goalkeeper Roy Bailey terminated his contract so that he could emigrate to South Africa to play for a club in Johannesburg. Winger Roy Stephenson, another player with Championship medals to his credit, has signed for Lowestoft in the Eastern Counties' League. I am sure that supporters will join me in wishing these loyal players all good fortune in the future.

This afternoon a hearty welcome is extended to Swindon Town, a side who will be trying to avenge the 2-1 Cup defeat we inflicted on them in the third round of the competition in January. This Wiltshire club are old rivals of the Town's from the Third Division (South) days and their last visit to Portman Road was in 1956-57 season when we won 4-1.

On Wednesday night the Mercia League team did well to complete a League double over Colchester at Layer Road, a late penalty giving us both points.

A.E.D.G.

- * Suits *by* **SAXON HAWK**
- * Rain and Casual Wear *by* . . . **GANNEX**
- * Shirts *by* **TOOTAL-RADIAC**
- * Underwear *by* **WOLSEY**
- * Socks *by* **BYFORD**
- * Service *by*

J. & J. Edwards Ltd.
TAVERN ST., IPSWICH



PREPARE FOR THE UNEXPECTED...

by joining one or both Hospital Contributors Schemes, organized on a non-profit-making basis and run by Voluntary Committees.

- (1) 3d. per week, for Cash Grant whilst in Hospital, Maternity, Optical, Dental and miscellaneous grants. £1,000,000 paid in benefits to Subscribers, 1948-1963. £51,250 paid in grants for amenities for Hospital patients, same period.
- (2) Graduated Scale of subscriptions for grants to assist towards the cost of Treatment in Hospital Private Wards and Nursing Homes.

Write for full particulars of both schemes to The SECRETARY,
NORFOLK AND SUFFOLK HOSPITALS CONTRIBUTORS' ASSOCIATION
38 ST. GILES STREET, NORWICH

Appearances and Goalscorers, Season 1964-65

FIRST TEAM			COMBINATION		
	<i>Appear-</i>	<i>Goals</i>		<i>Appear-</i>	<i>Goals</i>
	<i>ances</i>			<i>ances</i>	
Bailey, R. ...	9	—	Carberry, L. ...	16	—
Baker, G. ...	28	11	Fordham, D. ...	17	3
Davin, J. ...	19	—	Thorburn, J. ...	10	—
Baxter, W. ...	30	1	Treacy, F. ...	17	4
Blackwood, R. ...	15	1	Thompson, K. ...	16	2
Bolton, J. ...	19	—	Colrain, J. ...	9	1
Brogan, F. ...	34	13	Denton, M. ...	11	6
Nelson, A. ...	5	—	Elsworthy, J. ...	19	8
Broadfoot, J. ...	30	9	Harper, C. ...	20	—
Leadbetter, J. ...	22	—	Hegan, D. ...	2	1
Hegan, D. ...	29	7	Nelson, J. ...	13	—
McNeil, M. ...	31	1	Smith, T. ...	14	—
Smith, T. ...	12	—	Stephenson, R. ...	15	4
Stephenson, R. ...	5	—	Thorne, T. ...	11	—
Thrower, D. ...	19	1	Thrower, D. ...	13	—
Elsworthy, J. ...	3	—	Bolton, J. ...	9	—
Colrain, J. ...	16	9	Dougan, G. ...	11	1
Carberry, L. ...	9	—	Leadbetter, J. ...	4	—
Thorburn, J. ...	14	—	May, I. ...	6	—
Thompson, K. ...	7	—	Spearritt, E. ...	11	2
Lea, C. ...	17	—	Bevis, D. ...	13	—
Treacy, F. ...	8	4	McNeil, M. ...	1	—
Hancock, K. ...	11	—	Blackwood, R. ...	8	1
Bevis, D. ...	2	—	Tallis, J. ...	6	1
Coddington (Huddersfield)			Shreeve, J. ...	2	—
	1 o.g.		Baker, G. ...	3	—
Nicholson (Huddersfield)			Bailey, R. ...	3	—
	1 o.g.		Ferry (Arsenal Res.)	1 o.g.	
Reeves (Plymouth)	1 o.g.		Davin, J. ...	5	—
			Walsh, R. ...	1	—
			Cockcroft (Northampton		
			Res.)	1 o.g.	

This record does not include friendly fixtures at Southend and E. S. Clydebank.

Launderers to
Ipswich Town Football Club

**THE IPSWICH
STEAM LAUNDRY LTD.**
ALDERMAN ROAD, IPSWICH

TOP SCORERS
in the field of
**LAUNDRY and
DRY-CLEANING**

'Phone 54407-8 for our van to call

SEED POTATOES

(NOT PREPACKED)

**ALL GRADE A SCOTCH &
IRISH**

**EARLY SECOND EARLY
and MAIN CROP**

FROM 5/9 STONE

**SUTTONS & UNWINS
SEEDS**

UNDERWOOD'S

**BROOK ST. TEL. IPSWICH
56276**

DIVISION II
League Positions—1964-65

				Goals					
				P.	W.	D.	L.	F.	A. Pts.
Northampton	32	16	12	4	47	33 44
Newcastle	33	19	5	9	67	41 43
Norwich	33	18	6	9	54	40 42
Derby	32	15	8	9	68	55 38
Bolton	30	16	5	9	67	45 37
Crystal Palace	31	13	8	10	43	39 34
Ipswich	33	10	14	9	58	56 34
Southampton	33	11	11	10	66	54 33
Bury	32	12	8	12	48	47 32
Plymouth	32	13	6	13	47	56 32
Manchester City	32	13	5	14	50	43 31
Coventry	33	12	7	14	55	60 31
Preston	31	10	11	10	55	60 31
Rotherham	30	10	9	11	52	52 29
Huddersfield	32	10	8	14	39	48 28
Portsmouth	33	9	9	15	43	59 27
Cardiff	30	8	10	12	43	43 26
Middlesbrough	32	9	8	15	55	61 26
Charlton	31	10	6	15	47	60 26
Swindon	32	12	2	18	50	66 26
Swansea	31	7	10	14	44	60 24
Leyton Orient	31	9	6	16	41	61 24

ODEON SUNDAY, March 14th for 7 DAYS

BURT LANCASTER in
"THE TRAIN" (U)

1-55 5-00 8-10

"GAME RESERVE" (U) (Eastman Colour)

4-30 7-20

GAUMONT Sunday, March 14 for 6 days

(Special film presentation Wednesday only).

GERRY AND THE PACEMAKERS

"FERRY ACROSS THE MERSEY" (U)

also "FOR THOSE WHO THINK YOUNG" (U)

COLOUR

WEDNESDAY ONLY WALT DISNEY'S

"FANTASIA" (U)

Seats Bookable

COLOUR



NOW is the time to change your car. Visit our show-rooms to inspect the **1965** Austins and Rileys. Also available a fine selection of excellent used cars.

ST. AUGUSTINE'S GARAGE
Felixstowe Road (Tel.: 75238-9) **Ipswich**

Our Visitors . . .

SWINDON TOWN

History in brief. They play at the County Ground and are managed by Mr. Bert Head. They are noted for a successful youth policy.

Tony Hicks (goalkeeper). An agile and fearless player who is a product of Swindon's junior football. He signed professional in September 1962 and is preferred to Norman Oakley and Frank Haffey.

Owen Dawson (right-back). A former England Youth international who was signed from Portsmouth in June 1962. He was born at Hatfield.

John Trollope (left-back). A Swindon born player who joined the club direct from school. He gained a regular first team place at the age of 16 and has been an automatic selection ever since.

Roger Smart (right-half). Another local-born player. He was originally a forward, but has settled down well at wing-half.

Ken McPherson (centre-half). Born at Hartlepool, he was signed from Newport County in August 1961. A real hard worker, he was originally a centre-forward.

Gordon Atherton (left-half). Signed from Bury during the season for a large fee, he is an industrious and effective player.

Mike Summerbee (outside-right). Born at Cheltenham, he is another product of Swindon's Youth scheme. He played at centre-forward against Ipswich earlier in the season.

Ernie Hunt (inside-right). A former England Under 23 international, Swindon have turned down many offers for his services. A prolific goalscorer.

Dennis Brown (centre-forward). Signed from Chelsea at the end of last year, he has a dangerous shot and has settled down well with his new club.

Bill Atkins (inside-left). A strong, ball-playing forward, he joined Swindon from Aston Villa in 1959. Born at Solihull, he represented the Army while on National Service.

Donald Rogers (outside-left). An England Youth international who seems destined for further honours. One of the brightest stars on the books.

FOOTMANS

ON THE SECOND FLOOR, FOR COFFEE, LUNCH
OR AN EXCELLENT TEA IN PLEASANT
SURROUNDINGS AFTER THE MATCH!

FOOTMANS — A Debenham Store

Blue and White

BROGAN

(Weuford)

R. L. JOHNSON



Referee:

Mr. F. BYE

(Leaford)



Linesmen:

P. K. BYFORD

(Yellow Flag)

R. L. JOHNSON

(Red Flag)

11
ROGERS

10
ATKINS

9
BROWN

8
HUNT

7
SUMMERBEE

6

ATHERTON

5

MCPHERSON

4

SMART

3

TROLLOPE

2

DAWSON

1

HICKS

Colours:

SWINDON TOWN

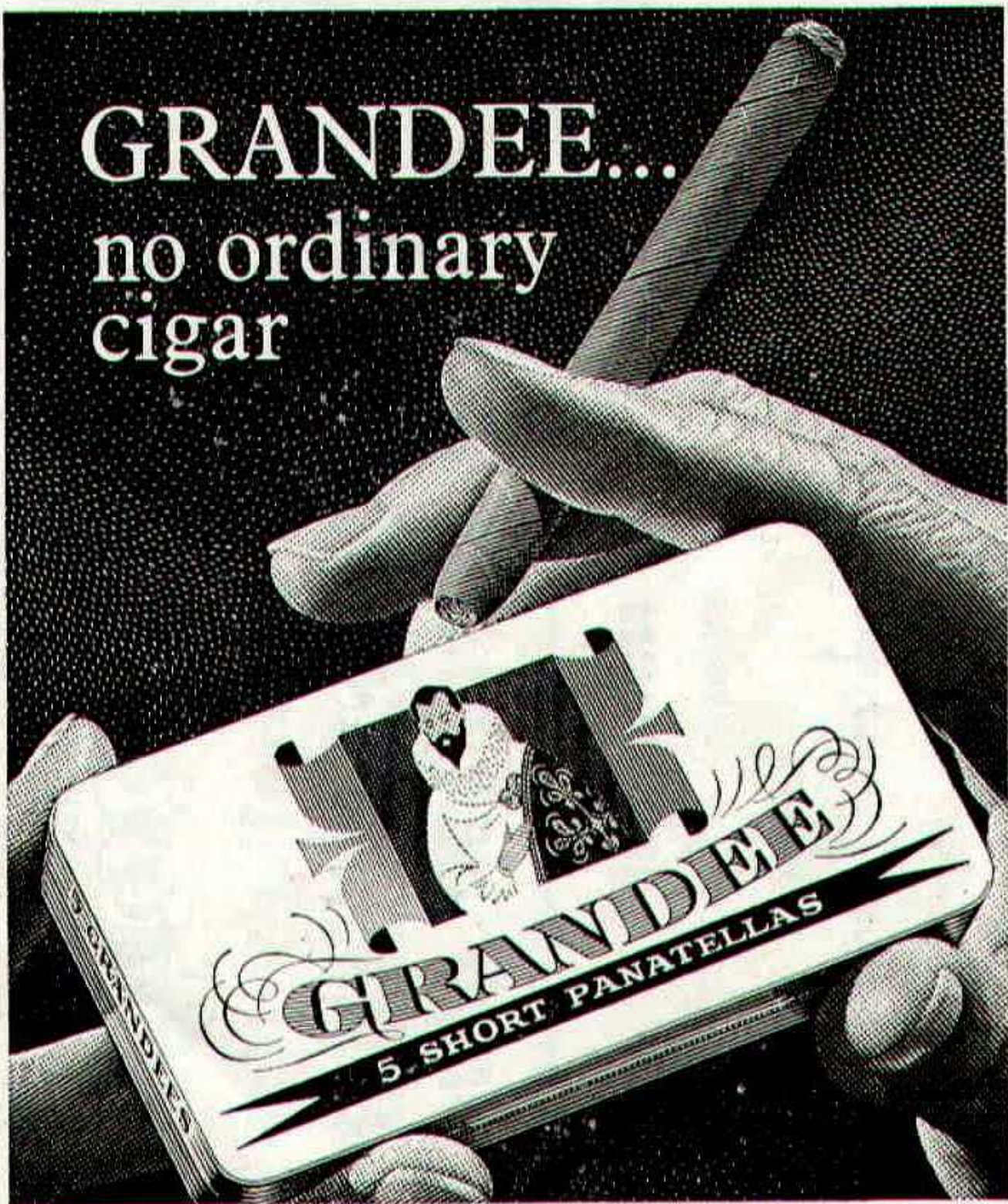
Red

*Such delightful Wedding
Gifts to Choose from
at*

Croydons TAVERN ST.,
IPSWICH

OPEN ON MONDAYS

GRANDEE...
no ordinary
cigar



A LAMBERT & BUTLER BRAND Packed in tins • Each cigar individually wrapped

FIXTURES

Football League Division 2

Football Combination

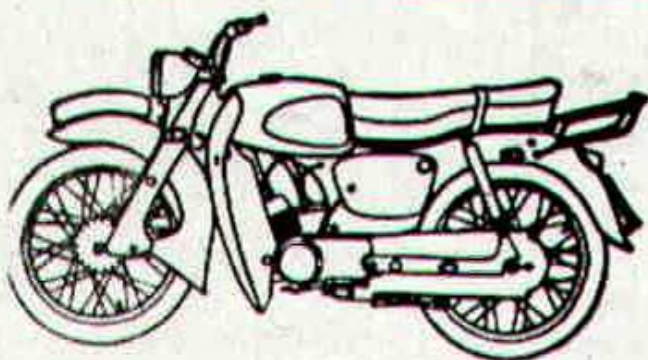
Date 1964	Opponents	Gd	Result	Date 1964	Opponents	Gd	Result
Aug. 22	Cardiff City -	A	0 0	Aug. 22	Tottenham Hotspur -	H	2 2
25	Coventry City -	H	1 3	29	Cardiff City -	A	1 4
29	Preston North End -	H	1 5	Sept. 5	Norwich City -	H	2 1
Sept. 1	Coventry City -	A	3 5	12	Plymouth Argyle -	H	2 1
5	Norwich City -	A	1 2	19	West Ham United -	A	0 2
12	Plymouth Argyle -	A	1 1	26	Shrewsbury Town -	H	2 1
15	Northampton Town -	H	0 0	Oct. 3	Northampton Town -	A	3 4
19	Bolton Wanderers -	H	1 4	10	Colchester United -	A	0 3
23	Coventry City (L.C.) -	A	1 4	17	Crystal Palace -	H	3 3
26	Middlesbrough -	A	4 2	24	Peterborough United -	A	0 3
29	Northampton Town -	A	2 3	31	Leicester City -	H	3 1
Oct. 3	Newcastle United -	H	3 1	Nov. 7	Chelsea -	A	1 7
7	Crystal Palace -	A	1 1	14	Portsmouth -	H	5 5
10	Rotherham United -	H	4 4	21	Mansfield Town -	A	2 2
17	Swansea Town -	A	1 1	28	Arsenal -	H	2 3
24	Derby County -	H	2 1	Dec. 5	Crystal Palace -	A	1 5
31	Swindon Town -	A	1 3	12	Tottenham Hotspur -	A	0 6
Nov. 7	Portsmouth -	H	7 0	19	Cardiff City -	H	0 1
14	(1) Manchester City -	A	0 4	26	Nottingham Forest -	H	0 2
21	Charlton Athletic -	H	1 1	28	Norwich City -	A	0 2
28	Leyton Orient -	A	0 0	Jan. 2	West Ham United -	H	1 0
Dec. 5	(2) Bury -	H	1 0	9	Fulham -	H	1 1
12	Cardiff City -	H	1 1	23	Shrewsbury Town -	A	1 2
19	Preston North End -	A	1 4	30	Northampton Town -	H	3 2
26	Huddersfield Town -	H	3 2	13	Leicester City -	A	1 3
28	Huddersfield Town -	A	0 0	27	Chelsea -	H	0 2
1965				Mar. 6	Portsmouth -	A
Jan. 2	Norwich City -	H	3 0	13	Mansfield Town -	H
9	(3) Swindon Town -	A	2 1	20	Arsenal -	A
16	Plymouth Argyle -	H	2 2	27	Peterborough United -	H
23	Bolton Wanderers -	A	0 0	31	Plymouth Argyle -	A
30	(4) Tottenham H. -	A	0 5	April 3	Colchester United -	H
Feb. 6	Middlesbrough -	H	5 2	10	Fulham -	A
13	Newcastle United -	A	2 2	16	Nottingham Forest -	A
16	E. S. Clydebank -	A	1 2	17			
20	(5) Rotherham Utd -	A	2 2	24			
27	Swansea Town -	H	3 0	May 1			
Mar. 5	Bury -	A	1 0				
13	Swindon Town -	H				
20	Portsmouth -	A				
27	(S.F.) Manchester City -	H				
April 3	Charlton Athletic -	A				
10	Leyton Orient -	H				
17	Derby County -	A				
19	Southampton -	H				
21	Southampton -	A				
24	Crystal Palace -	H				
May 1	(Cup Final)						

These Fixtures are the Copyright of the Football League Ltd., and are printed by their permission under Licence No. 2. They must not be reproduced in whole or in part without permission from the Football League Ltd.

F.A. Cup dates shown (1), (2), (3), (4), (5), (6), S.F. and Final. L.C. League Cup.

Sportsmen!

BUY YOUR MOTOR-CYCLE
FROM A FELLOW SPORTSMAN!



TRIUMPH — GREEVES
HONDA — SUZUKI
MOBYLETTE — NSU
RALEIGH, etc.

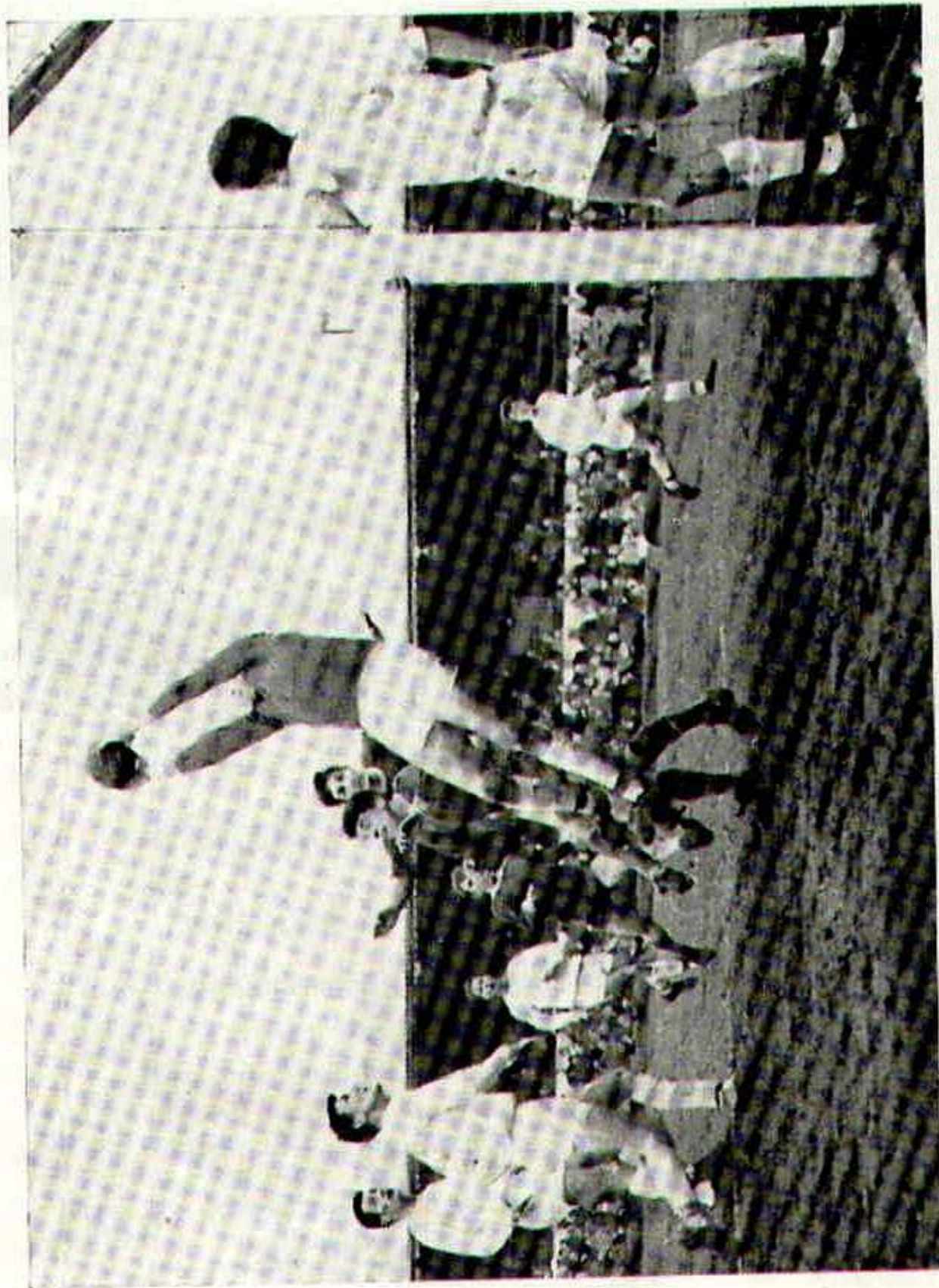
PART EXCHANGES — H.P. TERMS

The name of
Dave Bickers is a
household word
in the
Motor Cycle
Racing World.
It is your
guarantee of a
good machine—
backed by an
experienced staff
with an efficient
Service after Sale

DAVE BICKERS

79-83 WOODBRIDGE ROAD

Telephone **IPSWICH 57401**



SWANSEA goalkeeper Ron Briggs leaps to hold a centre from the right when challenged by Frank Treacy and Frank Brogan at Portman Road a fortnight ago. Ipswich won the match 3-0.

THINK OF SUMMER!

**ARCHERY ATHLETICS BOWLS
CRICKET FISHING GOLF
SWIMMING TENNIS WATER SKIING**

**ALL THE 1965 RANGE OF
CLOTHING EQUIPMENT & FOOTWEAR**

ARE AVAILABLE FROM

J. V. CROSS (ROYIAN SPORTS) LTD

24 QUEEN ST., IPSWICH Tel. 52760

SERVICE BY SPORTSMEN FOR ALL SPORTS

GROUP TRAVEL BY BRITISH RAILWAYS

If your Party numbers 10 or more, British Railways will quote you a Cheap Group Travel Rate.

Ask your Local Station Master or any British Rail Travel Agency for full details.



GERRY BAKER (No. 9), the Ipswich centre-forward, challenges Swansea goalkeeper Ron Briggs at Portman Road on February 27th.

HALF-TIME SCORE BOARD

A Burnley v. Sheffield Wed.	L Huddersfield v. Leyton O.
B Everton v. Aston Villa	M Middlesbro' v. Rotherham
C Fulham v. Leeds	N Newcastle v. Norwich
D Manchester U. v. Chelsea	O Northampton v. C. Palace
E Notts. Forest v. Arsenal	P Preston v. Portsmouth
F Sheffield U. v. Liverpool	Q Southampton v. Bury
G Tottenham v. Blackpool	R Bristol City v. Luton
H W. Bromwich v. Leicester	S Reading v. Colchester
J West Ham v. Sunderland	T Southend v. Brentford
K Bolton v. Swansea	U Watford v. Bournemouth

Lucky number programme (Swansea match): Mr. C. BRAGG, Monklands, Mount Hill, Halstead.

I.T.S.A. NOTES

IT now seems to be an understatement to say that "you can't stop 'em" after their great win at Bury last Friday night. It now appears that they cannot go fast enough.

The favourable comments from sporting journalists in the National Press seem to indicate once more they enjoy a healthy respect; at times they even become generous. Of course, it could be that some of the fashionable clubs are not now good writing material.

Nine games to play, home and away, and I cannot believe that with the continuance of the present run and form, Town will lose more than two more points.

Having said that I am reminded that we have Swindon Town as our guests for this afternoon, trying no doubt to avenge their Cup defeat by Ipswich earlier in the season.

We look forward to a good sporting game with Ipswich victorious.

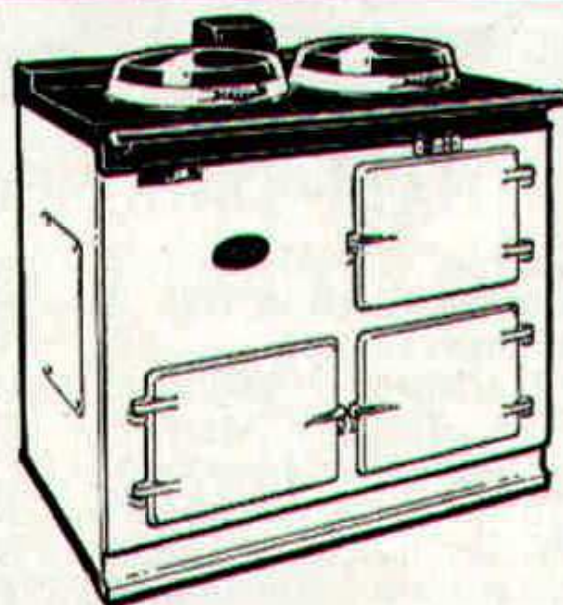
Don't forget to purchase your handbook if you have not already done so.

J.A.G.

See the latest

AGA

Cookers
being demonstrated
at our showrooms



H. WARNER & SON LIMITED

Heating, General and Water Engineers

LION ST., CORNHILL, IPSWICH Tel. 53702

MERCIA YOUTH LEAGUE & CUP

Season 1964/65

LEAGUE CUP							F	A
1964								
Sept.	2	Chelmsford City	Away	6	2
"	9	Romford	Home	8	1
"	22	Bedford Town	Home	4	1
Oct.	3	Cambridge United	Away	0	1
"	6	Colchester United	Home	3	4
"	15	Cambridge City	Away	2	3
"	20	Chelmsford City	Home	9	1
Nov.	3	Bedford Town	Away	2	1
Dec.	9	Colchester United	Away	1	3
"	23	Romford	Away	5	3
1965								
Jan.	5	Cambridge United	Home	7	0
"	9	Cambridge City	Home	5	1
LEAGUE								
Jan.	14	Cambridge City	Away	1	1
"	19	Colchester United	Home	3	2
"	26	Romford	Home	10	0
Feb.	6	Cambridge United	Away	3	1
"	9	Chelmsford City	Home	4	3
"	17	Romford	Away	5	1
"	23	Cambridge City	Home	4	1
March	2	Bedford Town	Away	P	P
"	10	Colchester United	Away	2	1
"	23	Bedford Town	Home		
April	7	Chelmsford City	Away		
"	13	Cambridge United	Home		

All mid-week matches will be played at Portman Road, kick-off 7.30 p.m.

FOOTBALL COMBINATION

Tables of Results to Monday, 8th March 1965 (Not Inclusive)

				DIVISION I				Goals		
				P.	W.	D.	L.	F.	A.	Pts.
Chelsea	27	19	4	4	79	27	42
Tottenham Hotspur	26	16	4	6	80	36	36
West Ham United	26	17	2	7	67	35	36
Nottingham Forest	28	14	6	8	56	43	34
Peterborough United	24	13	4	7	59	47	30
Arsenal	25	13	3	9	61	44	29
Cardiff City	26	12	5	9	51	45	29
Northampton Town	28	11	4	13	52	62	26
Leicester City	24	11	3	10	51	51	25
Portsmouth	27	10	5	12	55	63	25
Norwich City	26	10	5	11	35	41	25
Fulham	27	10	3	14	45	56	23
Plymouth Argyle	27	9	4	14	43	50	22
Crystal Palace	25	9	3	13	43	44	21
Shrewsbury Town	26	7	6	13	49	72	20
Ipswich Town	26	6	5	15	36	67	17
Mansfield Town	23	5	5	13	45	64	15
Colchester United	23	4	3	16	31	84	11

CUBITT & GOTT

LIMITED

WESTERFIELD : : IPSWICH

(Contractors to IPSWICH TOWN FOOTBALL CLUB)

OFFER THEIR SERVICES TO HOUSEHOLDERS

TELEPHONE



54822

* HOUSE MAINTENANCE

* HEATING INSTALLATIONS

* NEW BUILDINGS

**Your
Saturday Evening
Football Fixture**

THE

GREEN UN

Price 3d

from your Newsagent

**Check Your Coupon
Follow Local Football**

For your

RADIO, TELEVISION

and

DOMESTIC ELECTRICAL

APPLIANCES

call or Phone

A. E. L. TYLER

& SON

189/193 Felixstowe Road

'Phone IPSWICH 77162

**ALL LEADING MAKES
FULLY EQUIPPED SERVICE
DEPARTMENT**

FOOTBALL COMPETITION for Sat., 20th March £25

BY FORECASTING CORRECT SCORES OF THREE MATCHES PRINTED BELOW

HOME	AWAY	Score		Score		Score		Score		Score	
		H	A	H	A	H	A	H	A	H	A
NORWICH	NORTH'PTON										
PORTSMOUTH	IPSWICH										
COLCHESTER	SOUTHEND										

Sender's

name

and address

RULES

1. Only coupon from official programme allowed.
2. Coupons must reach club office, Portman Road, at least 24 hours before matches played.
3. Name and address of sender must be printed on back of envelope, and front marked "COMPETITION".
4. Proof of posting is not proof of delivery.
5. Claims by post not later than Tuesday following date of matches played. Envelopes to be marked Claims.
6. In the event of tie prize will be equally divided. If no correct forecast received, prize will be carried forward until won.
7. Abandoned matches. Score at time of abandonment.
8. Postponed matches. More than one postponement, competition declared void and prize money carried forward.
9. Entry to the Competition implies acceptance of all these rules.
10. The 3 correct forecasts to be in the same column.

Fixtures copyright of Football League.

Not more than 5 Entry Coupons per person.

Competition for Sat., 6th March, six winners shared £25 and received £4 3s. 4d. each.

Entries and claims must be addressed to Football Club Office.

2087

EASTERN COUNTIES

Established
1855

BUILDING SOCIETY

Incorporated
1937

(Member of the Building Societies Association)

**Why not open a
Savings Account
with the Society?**

*Any sum from 1/- upwards
accepted at any time.*

*The total holding or any
part thereof may be with-
drawn at short notice.*

**SHARES AND DEPOSITS IN THIS SOCIETY
ARE TRUSTEE INVESTMENTS**

Registered Chief Office:

13 & 15 QUEEN STREET, IPSWICH

Telephone: 53125/6/7

Managing Director: Donald A. Gould, F.B.S.

ASSETS EXCEED £11,000,000

Branch Offices: **92 HAMILTON ROAD, FELIXSTOWE**
6 CROUCH STREET, COLCHESTER

Printed by The Suffolk Press Ltd., Turret Lane, Ipswich